

IEEE Standard Criteria for Safety Systems for Nuclear Power Generating Stations

Sponsor
**Nuclear Power Committee
of the
IEEE Power Engineering Society**

Approved June 17, 1991
IEEE Standards Board

Correction Sheet
Issued January 30, 1995

The following corrections should be made to the standard:

On page 17, Section 5.1, the word “probable” should be replaced by the word “probabilistic” in three places in the second and third paragraphs. The affected sentences should read as follows:

In paragraph 2: The performance of a probabilistic assessment of the safety systems may be used to demonstrate that certain postulated failures need not be considered in the application of the criterion. A probabilistic assessment is intended to eliminate consideration of events and failures that are not credible...

In paragraph 3: Where reasonable indication exists that a design that meets the single-failure criterion may not satisfy all the reliability requirements specified in 4.9 of the design basis, a probabilistic assessment of the safety system shall be performed.

On page 22, Figure 5 should be replaced by the figure shown on the other side of this page.

On Page 23, Section 6.8.1, the reference to ISA S67.040-1987 should refer to ISA S67.04-1987.

On page 23, Section 7, the word “Executive” in the title should be replaced by the word “Execute,” to read “Execute Features—Functional and Design Requirements.” This correction should be made to the title in the table of contents as well.

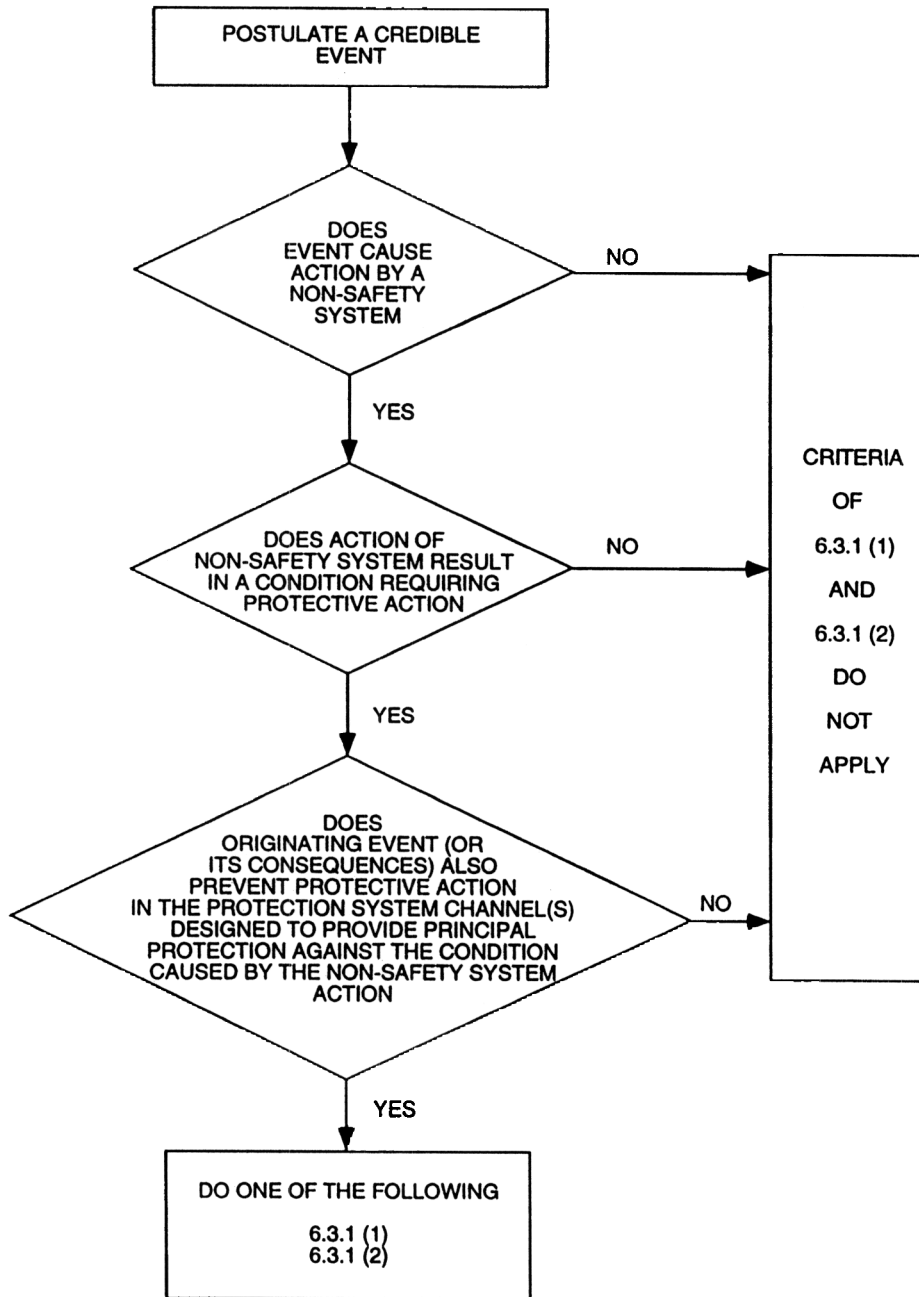


Fig 5
Interpretation of 6.3.1 of IEEE Std 603-1991